

# CleanCare

WORLD PRODUCT RANGE  
CATALOGUE





**You never have to look far to find a Numatic vacuum keeping all industries clean ... right across the globe.**

CleanCare vacuums continue to provide the latest in innovation across the full range. New "A" rated commercial energy saving vacuums provide "Greener" cleaning to all with improved cleaning performance.

In this catalogue you will find many new and exciting products using our latest research and technology coupled with an immense amount of good practical common sense. You will also see that our time tested professional designs have continued to develop and advance to meet the increasing demands of the worldwide cleaning industry.



## Contents

Henry and Henry Xtra	4-5	Microfilter & Hepa Range	18-19
ProSave Range	6-7	Eco Dry	20-21
ProVac Range	8-9	CombiVac	22-23
Cordless Vac Range	10-11	Wet Vac Range	24-31
Steel Top Range	12-13	CleanTec Range	32-35
All Steel & Aircraft Range	14-15	Accessory kits	38-39
RucSac Vacuums	16-17		

**Whichever Cleancare vacuum you choose, they all contain the same core values... Innovation, Quality and Value.**



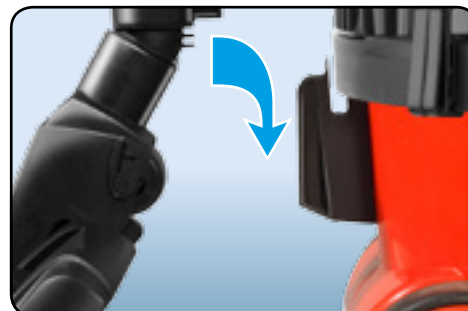
# Henry<sup>HVR200</sup>, Henry Xtra<sup>HVX200</sup>

Henry and Henry Xtra bring professional cleaning to all and are packed full of innovative features.

With the introduction of ECO technology, Henry not only gives you unbeatable cleaning performance but now also saves on energy costs... clever!



TriTex / HepaFlo filtration



Wand docking for easy storage



Hi / Lo 2 Speed performance system

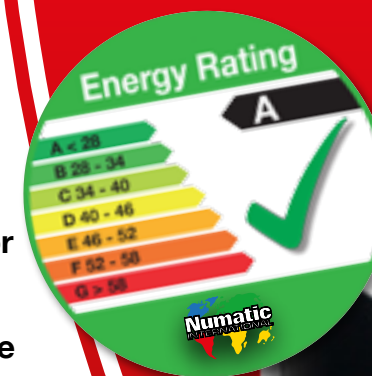


10m cable rewind and storage system



HVR200

- **A Class**  
Energy efficient, A rated.
- **High Efficiency Motor**  
Numatic high efficiency long life motor.
- **2 Speed Performance System**  
Hi/Lo selection with a flick of a switch.
- **10 Metre Cable**  
Easy reach, 10 metre cable and rewind storage system.
- **TriTex Filtration System**  
Improves filtration, cleanliness and capacity.
- **Wand Docking**  
Convenient, on-board wand docking storage.
- **HepaFlo**  
Easy to change HepaFlo bags.
- **Professional Accessory Set**  
A tool for every job, full accessory kit with stainless steel tube set.



HVX200



AiroBrush, high performance carpet care



HepaFlo bags, easy to use and clean to empty



Comprehensive accessory kit (see page 38)

Model	Motor	Power	Suction H <sub>2</sub> O	Kit	Drum Capacity	Cleaning Range	Weight	Dimensions WxLxH	Energy Efficiency Class A-G
HVX200	620W	230V AC 50/60Hz	2300mm	AS1, AS2 & XS1	9L	26.8m	8.1kg	360x340x370mm	A
HVR200									

Results obtained using ProFlo 290 Floortool



# ProSave *PSP180, PSP200, PSP370*

A choice of 3 professional sizes all saving 50% in energy...  
performing 20% better. Designed to work for a living and work hard.



- **High Efficiency Motor**  
Numatic high efficiency long life motor
- **10 Metre Cable**  
Easy reach, 10 metre cable.
- **TriTex Filtration System**  
Improves filtration, cleanliness and capacity.
- **Wand Docking**  
Convenient, on-board wand docking storage.
- **HepaFlo**  
Easy to change HepaFlo bags.
- **Professional Accessory Set**  
A tool for every job, full accessory kit with aluminium tube set.
- **A Class**  
Energy efficient, A rated.



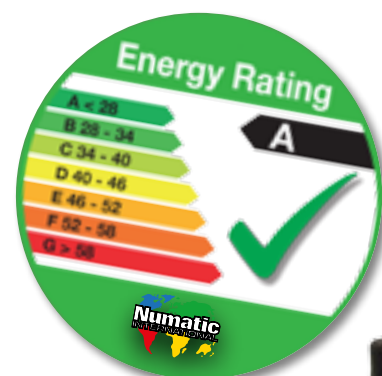
ProFlo high efficiency combination floor tool



Numatic high efficiency long life motor



Nucable easy replacement plugged cable system



PSP180



PSP370



PSP200

Model	Motor	Power	Motor only Airflow	Suction H <sup>2</sup> O	Kit	Drum Capacity	Cleaning Range	Weight	Dimensions WxLxH	Energy Efficiency Class A-G
PSP 180	620W	230V AC 50/60Hz	48L/sec	2300mm	AH1 AH2	8L	26.8m	7.6kg	360x340x340mm	A
PSP 200						8L		8.0kg	360x340x370mm	
PSP 370						15L		8.2kg	355x355x465mm	



# ProVac PPR200, PPR370

When a vacuum cleaner is used six or more hours a day it is demanding on both the user and the machine, only the best will do!

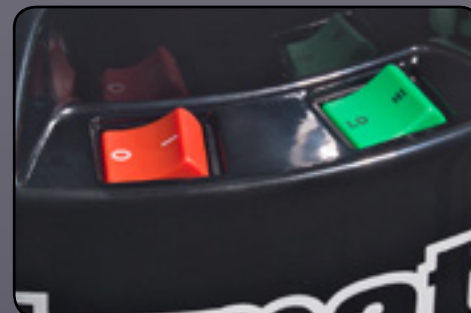
- **High Efficiency Motor**  
Numatic high efficiency long life motor
- **12.5 Metre Cable**  
Professional specification cable rewind system.
- **TriTex Filtration System**  
Improves filtration, cleanliness and capacity.
- **Wand Docking**  
Convenient, on-board wand docking storage.
- **HepaFlo**  
Easy to change High efficiently HepaFlo bags.
- **Professional Accessory Set**  
A tool for every job, full accessory kit with stainless steel tube set.
- **A Class**  
Energy efficient, A rated.



PPR370



Easy change plugged cable



HI-LO 2 speed performance system



HepaFlo bags, clean to use and easy to empty

Model	Motor	Power	Motor only Airflow	Suction H <sub>2</sub> O	Kit	Drum Capacity	Cleaning Range	Weight	Dimensions WxLxH	Energy Efficiency Class A-G
PPR200	620W	230V AC 50/60Hz	48L/sec	2300mm	AS1	9L	31.8m	9.1kg	355x355x415mm	A
PPR370					AS2	15L		9.3kg	355x355x465mm	

# ProVac PPT220, PPT390

An innovative vacuum design providing ease of handling and the total convenience of lift off storage for all the cleaning essentials.

Using the optional extra caddy (red, blue, green or yellow) the PPT can accommodate even more storage, if required.

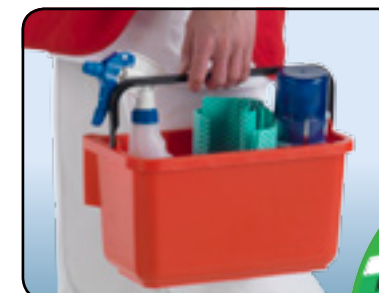
- **12.5 Metre Cable**  
Professional specification cable rewind system
- **TriTex Filtration System**  
Improves filtration, cleanliness and capacity.
- **Trolley Design**  
Lift off storage caddy with the option of adding a second. Telescopic handle for ease of transit and compact storage.
- **On the Move**  
Large rear wheels provide stability and ease of transport on stairways.
- **Plugged Mains Cable**  
Cable replacement is quick and easy, if required.



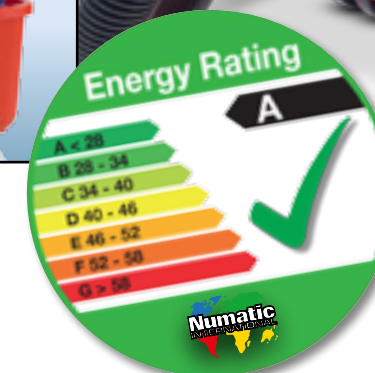
PPT220



PPT full size safe and secure docking system



Swing and lift off caddy system



PPT390

Model	Motor	Power	Motor only Airflow	Suction H <sub>2</sub> O	Kit	Drum Capacity	Cleaning Range	Weight	Dimensions WxLxH	Energy Efficiency Class A-G
PPT220	620W	230V AC 50/60Hz	48L/sec	2300mm	AS1	9L	31.8m	12.3kg	355x355x615mm	A
PPT390					AS2	15L		12.6kg	355x355x655mm	



# CordLESS NBV190, PBT230, RSB140

**36V cordless vacuum innovation presents performance, simplicity, convenience and total freedom... any time... any where.**

There are many occasions when cordless professional cleaning is the most simple solution in difficult circumstances, avoiding any conflict with the public and concerns in complying with increasing issues of Health and Safety and increasing regulations in such applications as the cleaning of aircraft.

- **36V Battery Pack**  
Exclusive lithium polymer 36V battery pack.
- **Charging Station**  
Off-board charger keeps you cleaning for longer.
- **Cleaning Choice**  
Three models to suit all professional cleaning applications.
- **LCD Charge Indicator**  
Leaves nothing to chance you'll know exactly how much charge you have.
- **TriTex Filtration System**  
Improves filtration, cleanliness and capacity.
- **HepaFlo**  
Easy to change high efficiency HepaFlo bags.



Quick and easy battery change

Optional extra battery pack



Battery charger system included



Secure battery system



Swing and lift off caddy system (PBT230)



Battery power indicator (NVB and PBT display shown)

10 (See page 38 for full accessories)



NBV190



RSB140



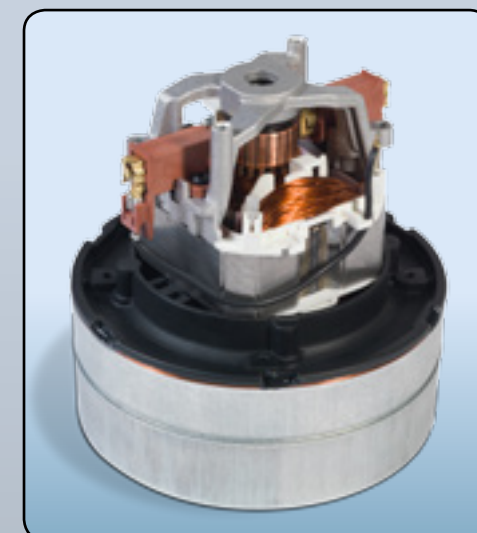
PBT230

Model	Motor	Power Lithium Polymer	Motor only Airflow	Suction H <sub>2</sub> O	Kit	Drum Capacity	Run Time	Charge Time	Weight	Dimensions WxLxH
NBV190	250W	36V	20L/sec	1000mm	AA29E	8L	30mins	3.5hrs	6.38kg	340x340x340mm
PBT230					AA30E	9L			8.94kg	355x355x615mm
RSB140					AA30E	6L			7.3kg	250x360x550mm



# SteelTop NVQ200, NVQ370, NVQ380

The “Steel Top” originals are an essential part of our history but, at the same time, have established themselves in a whole range of applications to be the quality and performance standards against which we will be judged for years to come.

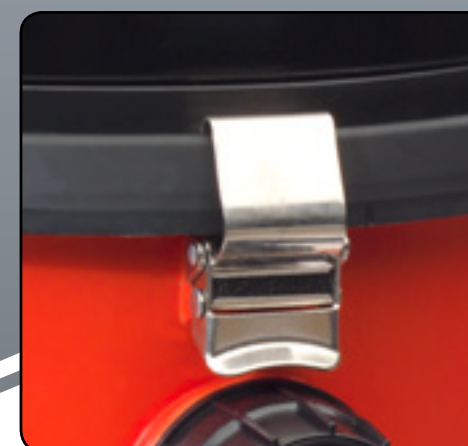
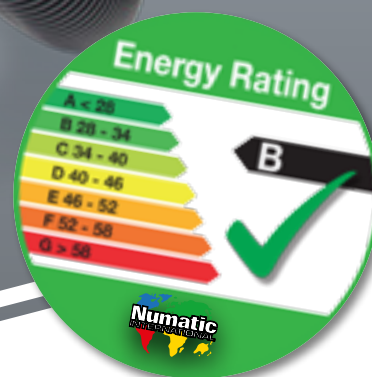
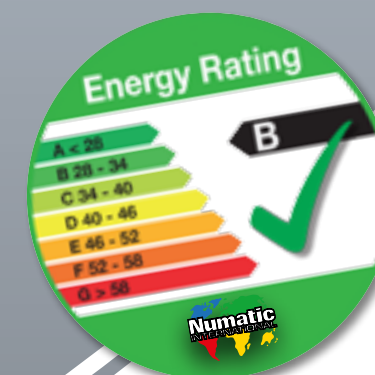


TwinFlo 2 stage high efficiency motor



Nucable easy replacement plugged cable system

- **Built to Last**  
All steel deep-drawn head provides a structure of exceptional strength
- **Noise Reduction**  
Patented Microtec noise reduction system.
- **Professional and Powerful**  
Long life professional TwinFlo motor.
- **HepaFlo**  
Easy to change high efficiency HepaFlo bags.
- **TriTex Filtration System**  
Improve filtration, cleanliness and capacity.
- **Nucable System**  
Quick and simple cable replacement, saving on expensive repairs due to damaged cables.
- **Professional Accessory Kit**  
Accessory kit incorporates stainless steel tube set. (See page 38 for full accessories)



Professional specification throughout



HepaFlo bags, clean to use and easy to empty

Model	Motor	Power	Motor only Airflow	Suction H <sub>2</sub> O	Kit	Drum Capacity	Range	Weight	Dimensions WxLxH	Energy Efficiency
										Class A-G
NVQ200	780W	230V AC 50/60Hz	48L/sec	2350mm	AS1 AS2	9L	31.8m	6.9kg	355x355x415mm	N/A
NVQ370						15L		7.5kg	355x355x465mm	B
NVQ380						15L		8.5kg	355x355x615mm	B



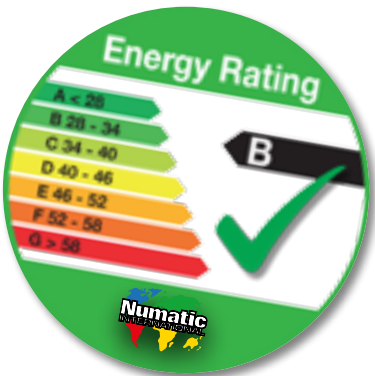
# AllSteel NQS250, NQS250B

The all steel construction of today's NQS models is where the Numatic story started.

We learnt from the 250 that the commercial cleaning business was rough and tough but, having said that, the majority of our early machines are still working 20+ years later.



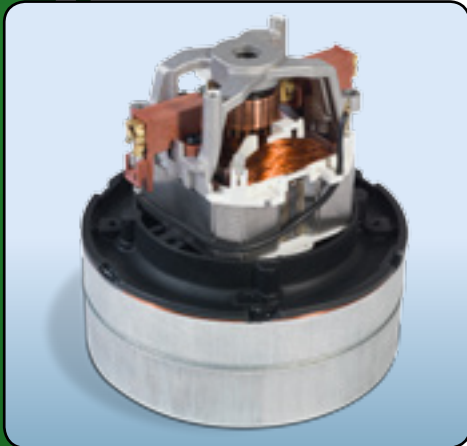
Nucable easy replacement plugged cable system



- Professional Accessory Kit**  
 Accessory kit incorporates all that is needed for the professional cleaner. (See page 38 for full accessories)
- Nucable System**  
 Nucable allows quick and simple cable replacement, saving on expensive repairs due to damaged cables.
- TriTex Filtration System**  
 Improve filtration, cleanliness and capacity.
- HepaFlo**  
 Easy to change high efficiency HepaFlo bags.
- A Class**  
 Energy efficient, A rated.
- All Steel Construction**  
 Tough and hard wearing, built for years of professional use.



Choice of blower or diffuser system



TwinFlo 2 stage high efficiency motor

Model	Motor	Power	Motor only Airflow	Suction H <sup>2</sup> O	Kit	Drum Capacity	Cleaning Range	Weight	Dimensions WxLxH						
NQS250	780W	230V AC 50/60Hz	43L/sec	2350mm	AS1 AS2	9L	26.8m	9kg	340x340x395mm						
NQS250B								10kg							
Model	Energy Efficiency														
	Class A-G														
NQS250/B	B														

# AirCraft AVQ250, AVQ380

These machines are built to an exacting 110V / 400Hz standard of operation, suitable for most aircraft on-board power supply systems.

Seriously strong in construction, generous accessories to a 38mm (1½”) standard, designed to clean aircraft and clean them well.



TriTex filtration



Professional specification throughout



ProFlo heavy duty floor tool

- Built to Last**  
 All steel deep-drawn power head and a single deep-drawn steel drum pressing with superb 4 wheel mobility and stability.
- Noise Reduction**  
 Patented Microtec noise reduction system.
- Professional and Powerful**  
 TwinFlo motor performance.
- HepaFlo**  
 Easy to change high efficiency HepaFlo bags.
- TriTex Filtration System**  
 Improve filtration, cleanliness and capacity.

Model	Motor	Power	Motor only Airflow	Suction H <sup>2</sup> O	Kit	Drum Capacity	Cleaning Range	Weight	Dimensions WxLxH
AVQ250	960W	110V 400Hz	47L/sec	2500mm	BA15	9L	26.8m	11kg	340x340x395mm
AVQ380						15L		9.5kg	355x355x485mm



# CordLess RucSac RSB140

The tremendous advantage of a cordless RucSac cleaner will be more than obvious, **NO CABLE**, allowing it to be used in numerous difficult situations with exceptional results.

Perfect for use in stairways, congested areas, busy pedestrian zones, cleaning aircraft, buses, even cinemas.



- **User Comfort**  
Convenience and safety with an ergonomically designed, comfortable harness.
- **36V Battery Pack**  
Exclusive lithium polymer 36V battery pack.
- **Charging Station**  
Universal charger keeps you cleaning for longer.
- **LCD Charge Indicator**  
Leaves nothing to chance you'll know exactly how much charge you have. Integrated within the fly lead control.
- **TriTex Filtration System**  
Improves filtration, cleanliness and capacity.
- **HepaFlo**  
Easy to change high efficiency HepaFlo bags.



On/Off and charge indicator

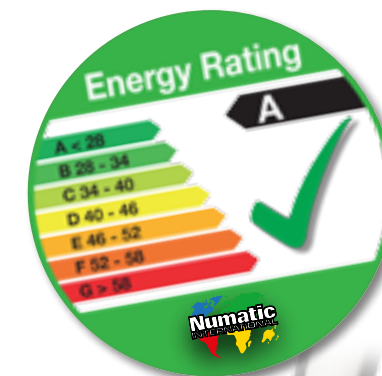


Secure battery lock system

# RucSac RSV130

When it comes to congested environments there can be no doubt that the practical features of the RSV (Ruc-Sac Vac) brings with it great advances in convenience cleaning.

The RSV produces vastly improved results by virtue of the old adage "the right machine for the right job". In many countries Ruc-Sac cleaning has become commonplace with substantial improvements in cost effective operation.



- **User Comfort**  
Convenience and safety with an ergonomically designed comfortable harness.
- **High Efficiency Filtration**  
Extra large filter system and 3-stage HepaFlo disposable dust bags, ensuring continuous operation and clean and easy emptying.
- **Professional Accessory Kit**  
Accessory kit incorporates all that is needed for quick and efficient cleaning of all surfaces.
- **A Class**  
Energy efficient, A rated.



Secure and comfortable harness



RSV mains hand control



Model	Motor	Power Lithium Polymer	Motor only Airflow	Suction H <sub>2</sub> O	Kit	Drum Capacity	Run Time	Charge Time	Weight	Dimensions WxLxH
RSB140	250W	36V	20L/sec	1000mm	AA30E	6L	30mins	3.5hrs	7.3kg	3250x360x550mm

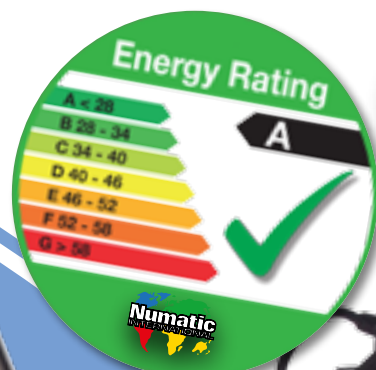
Model	Motor	Power	Motor only Airflow	Suction H <sub>2</sub> O	Kit	Drum Capacity	Cleaning Range	Weight	Dimensions WxLxH	Energy Efficiency Class A-G
RSV130	620W	230V AC 50/60Hz	48L/sec	2300mm	AS30	6L	31.4m	7.9kg	440x360x250mm	A



# MicroFilter MFQ370, CRQ370

Hospitals, clinics, clean rooms...  
high performance, Hepa filtration and  
confidence, that's what it's all about.

Micro Filter models are certified to an exceptional 99.95% efficiency with every one tested and certified before leaving the factory. The same goes for the CRQ models with up to 100% efficiency approval to a particle size of 0.1µm.



CRQ370



MFQ370

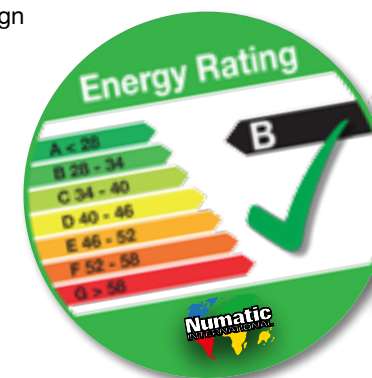


CRQ370

# Hepa PPH320

The PPH has all the many  
advanced features of the ProVac  
model range with an additional  
Hepa filter module achieving an  
exceptional H13 standard.

- **Professional Accessory Kit**  
Accessory kit incorporates stainless steel tube set.
- **Plugged Rewind System**  
Quick and simple cable replacement saving on expensive repairs and down-time due to damaged cables.
- **HEPA Microfilter Module**  
The compact HEPA module design is incorporated into the head design resulting in efficient filtration, use and storage.
- **HepaFlo**  
Easy to change high efficiency HepaFlo bags.
- **A Class**  
Energy efficient, A rated.



PPH320



PPH320



H13 Hepa filtration module



Easy replacement plugged cable system

Model	Motor	Power	Motor only Airflow	Suction H <sup>2</sup> O	Kit	Drum Capacity	Cleaning Range	Weight	Dimensions WxLxH
PPH320	620W	230V AC 50/60Hz	48L/sec	2300mm	AS1	12L	26.8m	7.7kg	355x355x465mm
MFQ370	780W				AS2	15L	26.8m	9.9kg	355x355x485mm
CRQ370	960W				A1	10L	26.8m	9.3kg	

Model	Energy Efficiency
	Class A-G
PPH320	A
MFQ370	B

CRQ Specialist vacuum does not require Eco rating.



# EcoDry NVQ570, NVDQ570

Power and performance in industrial terms needs to be matched to long life, reliability and user satisfaction.

The NVQ Industrial range uses Structofoam construction, it is an especially compounded material, it doesn't dent, scratch, crack or deteriorate but, equally, has no weight penalty. The 570 provides an easily transported industrial vacuum with plenty of capacity for most applications and a choice of one or two motor specifications.



Nucleable easy replacement plugged cable system



NVQ570  
(Single motor)

NVDQ570  
(Dual motor)

- AirFlo Design**  
 Directs efficient movement of air through the vacuum increasing performance by more than 30% throughout the operating range.
- Structofoam Construction**  
 Heavy duty Structofoam used in both head and body construction, built to endure years of hard industrial use.
- Nucleable System**  
 Power cables can be changed without the need for an electrical engineer.
- On the Move**  
 570 models are fitted with professional fully directional castors whilst the 900's are also equipped with large rear wheels, both providing excellent mobility even in the most demanding applications.



HepaFlo dust bag and Airflo system

# EcoDry NVQ900, NVDQ900

With excellent manoeuvrability the 900 is ideal for numerous trades where it must frequently be moved from place to place while still requiring a large and generous working capacity.



Large rear wheels providing excellent mobility



High efficiency ProFlo dry floor tool



NVQ900  
(Single motor)

NVDQ900  
(Dual motor)

Model	Motor	Power	Motor only Airflow	Suction H <sup>2</sup> O	Kit	Drum Capacity	Cleaning Range	Weight	Dimensions WxLxH
NVQ570	960W	230V AC 50/60Hz	48L/sec	2300mm	BA2	23L	26.8m	13.8kg	415x415x645mm
NVDQ570	960Wx2		96L/sec					16kg	
NVQ900	960W		48L/sec			40L		22.5kg	800x490x880mm
NVDQ900	960Wx2		96L/sec					25kg	



# CombiVac CV570, CVD570, CV900, CVD900

The unique filter system in the CombiVac enables the user to switch from dry to wet pick up without the need to change filters or kits.

The tough Structofoam construction doesn't dent, scratch or deteriorate but is light in weight and resists all standard cleaning chemicals.

CV570 (Single motor)  
CVD570 (Dual motor)



CV900 (Single motor)  
CVD900 (Dual motor)

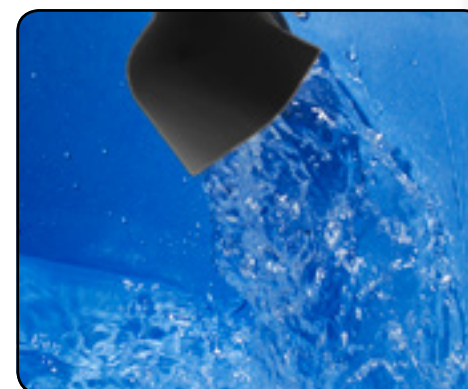


Giant wet and dry primary basket filter



Clean dry floors again and again

- **Wet and Dry Pick Up**  
No need to change kit or filter.
- **Washable Filter System**  
High efficiency dual washable filter system.
- **High Quality Accessories**  
BS8 kit with stainless steel tube set.
- **Structfoam Construction**  
Heavy duty Structfoam used in both head and body construction, built to endure years of hard industrial use.
- **Convenient Emptying**  
Emptying couldn't be easier using the unique tipping handle (900 model).



Cyclonic wet and dry system



CVD900 (Dual motor)

Model	Motor	Power	Motor only Airflow	Suction H <sup>2</sup> O	Kit	Drum Capacity	Cleaning Range	Weight	Dimensions WxLxH	
CV 570	1060W	230V AC 50/60Hz	49L/sec	2400mm	BS8	13L	26.8m	13.6Kg	415x415x645mm	
CVD 570	1060x2W		98L/sec					15.8Kg		
CV 900	1060W		49L/sec			30L		22.5Kg	800x490x880mm	
CVD 900	1060x2W		98L/sec					25Kg		



# WetVac WV370, WV380

The WV370 and WV380 are by design, wet or dry vacuum cleaners that perform totally without compromise in either mode.

We know full well that when you want to use as a dry machine, performance must be as good as a dry-only machine, big filters and the option of giant HepaFlo disposable dust bags ensure a high standard of operation.



WV370

WV380

Similarly, when required for wet work, a quick switch of the dry filter for the wet float valve and a change of floor nozzle will give you equally professional performance and a clean, dry floor at the end of it all.

- Wet or Dry**  
 Professional results in either mode, accessories provided for both wet and dry use.
- Compact**  
 Easy to store compact design, always close to hand when needed.
- On the Move**  
 Lightweight and with ergonomic easy carry handle...perfect for multi-site applications.
- Easy Emptying**  
 Fitted with easy empty handle providing simple and clean emptying.
- Tough Professional Construction**  
 For especially tough conditions the WV380 Structofoam drum design is ready for anything professional use will throw at it.



High efficiency ProFlo wet floor tool



Convenient easy carry handle

Model	Motor	Power	Motor only Airflow	Suction H <sub>2</sub> O	Kit	Dry/Wet Capacity	Cleaning Range	Weight	Dimensions WxLxH
WV370	1060W	230V AC 50/60Hz	49L / sec	2400mm	AA12	15/9L	26.8m	7.1kg	355x355x510mm
WV380								8.6kg	355x355x510mm

# WetVac WV470

The WV470 provides a larger alternative to the 370-380 series, with twice the capacity but to the same high performance standard be it wet or dry.

The folding handle design allows easy movement when in use, whilst being compact to store.

Large rear wheels provide stability and make light work of obstacles during transit.

The accessory kit provides tools for both wet and dry operation with lightweight aluminium tube set as standard.



Fold down transit handle WV470



Large rear wheel



Safety net filter and float assembly



WV470

- Wet or Dry**  
 Professional results in either mode. Accessories provided for both wet and dry use.
- Compact & Capable**  
 Compact with a small foot-print the 470 provides an impressive 20L Wet / 27L Dry capacity.
- Folding Handle**  
 The transit handle makes life easy when you need it and folds away when you don't... simple!
- On the Move**  
 Not everywhere will be flat and smooth, large rear wheels and directional castors make transporting the 470 easy, even when full.

Model	Motor	Power	Motor only Airflow	Suction H <sub>2</sub> O	Kit	Dry/Wet Capacity	Cleaning Range	Weight	Dimensions WxLxH
WV470	1060W	230V AC 50/60Hz	49L/sec	2400mm	AA12	27/20L	26.8m	9.6kg	358x450x710mm



# WetVac WV570, WVD570, WV900, WVD900

The mid range EcoWet 570 and 900 designs are classics in every respect both in design and manufacture.

EcoWets have now been raised to our full 38mm (1½”) standard, providing performance enhancements allowing single motor models to perform to improved standards. Both models use complete Structofoam construction, an exceptionally tough compound that doesn’t dent, scratch or deteriorate and yet it is lightweight and resists all standard cleaning chemicals.



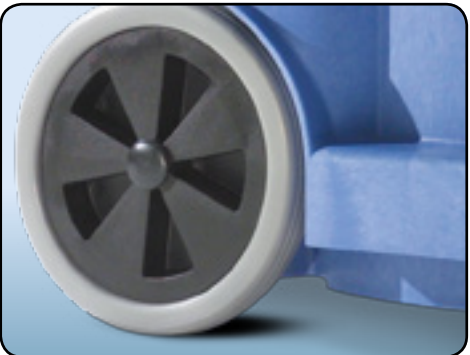
WV570 (Single motor)  
WVD570 (Dual motor)

WV900 (Single motor)  
WVD900 (Dual motor)

- **Wet or Dry**  
Professional results in either mode, professional accessories provided for both wet and dry use.
- **Structofoam Construction**  
Heavy duty Structofoam used in both head and body construction.
- **Nucable System**  
Power cable can be replaced without the need for an electrical engineer.
- **Easy Emptying**  
Both models are quick, clean and simple to empty. The 900's are equipped with a unique tipper handle.
- **Professional and Powerful**  
Long life professional TwinFlo bypass motor (Simplex or Duplex).



400mm wet pick up nozzle



Large 250mm rear wheels



Nucable easy replacement plugged cable system



Safety net filter and float assembly



Duplex twin motor power option

Model	Motor	Power	Motor only Airflow	Suction H <sup>2</sup> O	Kit	Dry/Wet Capacity	Cleaning Range	Weight	Dimensions WxLxH
WV570	1060W	230V AC 50/60Hz	49L/sec	2400mm	BB8	23/15L	26.8m	13.6kg	415x415x645mm
WV900						40/32L		22.5kg	800x490x880mm
WVD570	1060W x 2		98L/sec			23/15L		15.8kg	415x415x645mm
WVD900						40/32L		25kg	800x490x880mm



# WetVac *WV1800DH, WVD1800DH, WVD1800AP*

The “1800” big capacity models are simply unsurpassed within their field.

The Structofoam construction is unequalled, a selection of one or two motor power options, 38mm (1½”) accessories in stainless steel. Simply, as good as you can get.

The power head is fully Structofoam by design, incorporating TwinFlo 2-stage bypass motors and the Nucable plugged replaceable cable facility is an added feature.



WVD1800AP  
(Dual motor)



Auto pump, submersible pump (AP model)

- **Structofoam Construction**  
Heavy duty Structofoam used in both head and body construction.
- **Nucable System**  
Power cables can be changed without the need for an electrical engineer.
- **Auto Emptying**  
Auto pump models provide for continuous operation pumping out literally as much water as you can take in.
- **Professional and Powerful**  
Long life professional TwinFlo bypass motor.



Rear discharge outlet



10m Discharge hose for AP

Model	Motor	Power	Motor only Airflow	Suction H <sub>2</sub> O	Kit	Wet Capacity	Cleaning Range	Weight	Dimensions WxLxH
WVD1800AP*	1060W x 2	230V AC 50/60Hz	98L/sec	2400mm	BB7	70L	26.8m	35kg	684x785x935mm

\*AP= Auto pump (500W)



Safety trash basket



Rear dump hose



WVD1800DH  
(Dual motor)

WV1800AP  
(Single motor)

Model	Motor	Power	Motor only Airflow	Suction H <sub>2</sub> O	Kit	Wet Capacity	Cleaning Range	Weight	Dimensions WxLxH
WV1800DH*	1060W	230V AC 50/60Hz	49L/sec	2400mm	BS7	70L	26.8m	28.8kg	684x785x935mm
WV1800AP*	1060W x 2	230V AC 50/60Hz	98L/sec	2400mm	BB7	70L	26.8m	35kg	684x785x935mm

\*AP= Auto pump (500W) DH= Dump Hose



# WetVac WV2000DH, WV2000AP

The 2000 wet series is the epitome of heavy duty, Duplex professional machines that have been giving users their best performance for more than 20 years.

Like the full range of wets, the 2000 series has been enhanced by increased efficiency in terms of wet pickup, working better and quicker than ever before. You will find the 2000's trundling over building sites, used by fire crews in fire and flood damage applications. In fact, wherever there is lots of water to be collected, or for continuous pumping operations, there you will find the 2000 auto pump models, and you literally will not find better.

- On the Move**  
 An heavy duty steel external chassis makes light work of transportation even when at the full capacity of 70 litres.
- Auto Emptying**  
 Auto pump models provide for continuous operation pumping out literally as much water as you can take in.
- Professional and Powerful**  
 Long life professional TwinFlo bypass motors.
- Structfoam**  
 Heavy duty Structfoam head construction, built for years of hard use.
- Industrial Accessories**  
 Full 38mm (1 1/2") with long hoses and stainless steel tube set.



WVD2000AP  
(Dual motor)

10m Discharge hose for AP

Nucable easy replacement plugged cable system



WVD2000AP  
(Dual motor)

WVD2000DH  
(Dual motor)

WVD2000DH Dump hose

Bypass TwinFlo motor

Model	Motor	Power	Motor only Airflow	Suction H <sub>2</sub> O	Kit	Wet Capacity	Cleaning Range	Weight	Dimensions WxLxH
WVD2000DH*	1060W x 2	230V AC 50/60Hz	98L/sec	2400mm	BS7	70L	26.8m	26.2kg	640x530x970mm
WVD2000AP*								32.4kg	

\*AP= Auto pump (500W) DH= Dump Hose



# CleanTec CT370, CT470

There really is nothing quite so useful as a small, compact CleanTec machine that provides the combination of a PowerFlo liquid pump supply and efficient wet pick-up facility... all incorporated in one unit.

Mainly used in the cleaning of carpets and upholstery these machines can be equally effective on hard floors where there is a need for localized scrubbing and wet pick-up operation.



Hand upholstery and stair tool



Quick release cleaning liquid connector



Large rear wheels provide stability



Simple controls

- All Purpose 4 in 1**  
 Dry, Wet, Spray extraction carpet cleaning and upholstery cleaning/ car valeting.
- Tank Within a Tank**  
 Simple, clean and efficient. This unique design allows an easy to fill and quick to change system.
- Compact**  
 Easy to store and always on hand, ready for anything.

- Professional and Powerful**  
 Long life professional TwinFlo bypass motor.
- On the Move**  
 Large rear wheels provide stability during transportation. The CT470 is equipped with a handy folding handle, great for moving, great for storage.
- Professional Accessory Kit**  
 Accessory kit incorporates stainless steel tube set. (See page 38 for full accessories)



Fishtail extraction



Fold down transit handle WV470

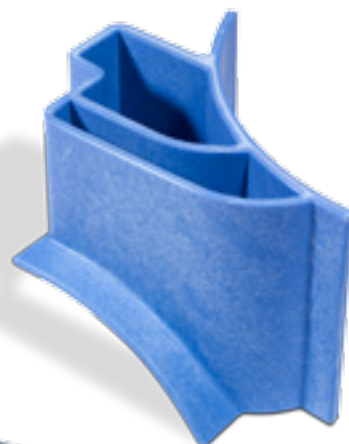
Model	Motor	Power	Motor only Airflow	Suction H <sup>2</sup> O	Kit	Dry/Wet Capacity	Cleaning Range	Weight	Dimensions WxLxH
CT370	1060W	230V AC 50/60Hz	49L/sec	2400mm	A40A	15/9L	26.8m	8.8kg	355x355x510mm
CT470						27/20L		12kg	358x450x710mm



# CleanTec CT570, CTD570

The 570 series has become the most popular contractors' extraction cleaner by choice... and this is not by chance, but by design.

The Structofoam 570 is available in both one and two-motored models built to the full TwinFlo specification and incorporating our Powerflo' pump and quick connect liquid system. The containers are also full Structofoam incorporating our unique "tank within a tank" system to maintain a compact and usable size.



Heavy duty Structofoam construction

- **All Purpose 4 in 1**  
Dry, Wet, Spray extraction carpet cleaning and upholstery cleaning/ car valeting.
- **Structofoam Construction**  
Heavy duty Structofoam used in both head and body construction.
- **Nucable System**  
Power cables can be changed without the need for an electrical engineer.
- **Professional and Powerful**  
Long life professional TwinFlo bypass motors.
- **Tank within a Tank**  
Simple, clean and efficient. This unique design allows an easy to fill and quick to change system.
- **Full Accessory Kit**  
Supplied with carpet, upholstery cleaning, wet and dry accessories.



Fishtail aluminium injection / extraction system



Upholstery nozzle

Model	Motor	Power	Motor only Airflow	Suction H <sub>2</sub> O	Kit	Dry/Wet Capacity	Cleaning Range	Weight	Dimensions WxLxH
CT570	1060W	230V AC 50/60Hz	49L/sec	2400mm	A41A	23/15L	26.8m	16.2kg	415x415x645mm
CTD570	1060Wx2	50/60Hz	98L/sec			23/15L		18.4kg	

# CleanTec CT900, CTD900

The 900 is our largest machine to incorporate the compact "tank within a tank" design, allowing for use in confined areas.

The 900's come in two models, one-motored or two-motored, both incorporating our TwinFlo bypass motors and integrated Powerflo' pump system. The pump system injects the cleaning solution deep into the carpets in a continuous deep cleaning cycle and these bigger machines will cover an area more than three times that of our smaller machines, without the need for emptying, this is especially important in office blocks and high rise apartment blocks.

- **All Purpose 4 in 1**  
Dry, Wet, Spray extraction carpet cleaning and upholstery cleaning/ car valeting.
- **Tank Within a Tank**  
Simple, clean and efficient. This unique design allows an easy to fill and quick to change system.
- **Structofoam Construction**  
Heavy duty Structofoam used in both head and body construction.
- **Easy to Empty**  
The unique tipper system incorporated within the chassis design allows for the machine to be emptied in floor drains or WC's where available.
- **On the Move**  
Large rear wheels provide stability during transportation.
- **Nucable System**  
Power cables can be changed without the need for an electrical engineer
- **Full Accessory Kit**  
Supplied with carpet, upholstery cleaning, wet and dry accessories.



Tip empty system



CT900  
CTD900



Tank within a tank



Upholstery nozzle

Model	Motor	Power	Motor only Airflow	Suction H <sub>2</sub> O	Kit	Dry/Wet Capacity	Cleaning Range	Weight	Dimensions WxLxH
CT900	1060W	230V AC 50/60Hz	49L/sec	2400mm	A41A	40/32L	26.8L	23kg	800x490x880mm
CTD900	1060Wx2	50/60Hz	98L/sec					25.5kg	



# HiLo CleanTec NHL15

The CleanTec Hi-Lo 15 has been designed from the ground up to reflect the need for quick and effective carpet care with the minimum of preparation and effort.

Almost every carpet cleaning task is made up of two areas, heavily soiled high traffic areas and a much larger area of carpet only lightly soiled.

The Hi-Lo system allows you to select the Hi pressure for heavily soiled areas and the Lo pressure for lesser soiled areas. This gives you the control you need reducing carpet wetting in areas where carpets need less cleaning penetration.

- Let the Weight do the Work**  
 Our TriJet carpet extraction head is of full aluminium construction inclusive of our EasyFlo movement system to ensure professional performance.
- Easy to Empty**  
 Two separate emptying systems, full removal of the dirty water tank or, where this is not practical, an integrated dump hose.
- Pressure When you Need it**  
 Hi-Lo system allows pressure selection between Hi 4 Bar (60 psi) and Lo pressure 2 Bar (30 psi).
- On the Move**  
 4 Wheel mobility and convenient handle provide total ease of transportation.



Easy dirty water tank removal



High performance three jet carpet extraction head

36 (See page 38 for full accessories)



Upholstery and spot cleaning extraction tool



Dump hose empty option



Hi / Lo performance control



NHL15

Model	Motor	Power	Motor only Airflow	Suction H <sup>2</sup> O	Kit	Extraction Capacity	Cleaning Range	Weight	Dimensions WxLxH
NHL15	1060W	230V AC 50/60Hz	49L/sec	2400mm	BS27	15L	26.8m	15.5kg	435x425x725mm



# Accessories *32mm Kits*

## AS1 / AS2



## AH1 / AH2



## XS1 - 607362



## AA12 - 607240



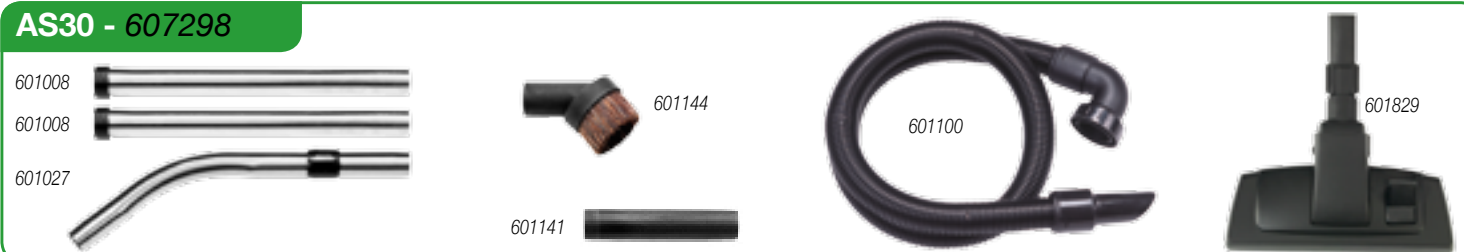
## AA29E - 607391



## AA30E - 607395



## AS30 - 607298



## A40A - 607147



## A41A - 607148



## A1 - 607201



# Accessories *38mm Kits*

## BA2 - 607164



## BS7 - 607249



## BA15 - 607188



## BS8 - 607241



## BS27 - 607248







**Numatic International  
Limited,**

Chard, Somerset,  
TA20 2GB,  
UNITED KINGDOM

Tel: 01460 68600  
Fax: 01460 68458

**[www.numatic.co.uk](http://www.numatic.co.uk)**



**Numatic International  
S.A.S,**

13/17 rue du Valengelier,  
EAE la Tuilerie,  
77500 Chelles,  
FRANCE

Tel: 01 64 72 61 61  
Fax: 01 64 72 61 62

**[www.numatic.fr](http://www.numatic.fr)**



**Numatic International  
BV**

BeNeLux Distribution  
Numatic International BV  
Postbus 101  
2400 AC Alphen aan den Rijn  
NEDERLAND

Tel: 0172 467 999  
Fax: 0172 467 970

**[www.numatic.nl](http://www.numatic.nl)**



**Numatic International  
GMBH**

Fränkische Straße 15-19,  
30455 Hannover  
DEUTSCHLAND

Tel: 05 11 98 42 16 0  
Fax: 05 11 98 42 16 20

**[www.numatic.de](http://www.numatic.de)**



**Numatic International  
Schweiz AG.**

Sihlbruggstraße 142  
6340 Baar,  
SCHWEIZ

Tel: 041 768 07 60  
Fax: 041 768 07 69

**[www.numatic.ch](http://www.numatic.ch)**



**Numatic International  
(Pty.) Ltd.**

16th & Pharmaceutical Roads,  
Midrand, Gauteng, S.A. 1685.

Tel: 0861 686 284  
Fax: 0861 686 329

**[www.numatic.co.za](http://www.numatic.co.za)**



Specification subject to change without prior notice.

05/15

©Numatic International Limited 2015